

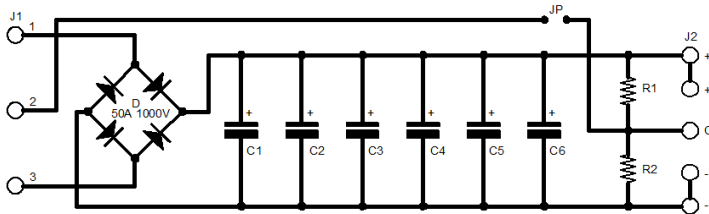


This is a complete rectifier module for Antek power supplies. It includes all components to convert AC to DC. The aluminum housing dissipate heat generates from the bridge rectifier. The PCB trace was calculated to pass the maximum continuous current up to 50A. It is a reliable rectifier unit for HiFi and motor driver power supply. A new version of bipolar output modules is available from stock.

Output Vdc = Vac x 1.414 – 2V

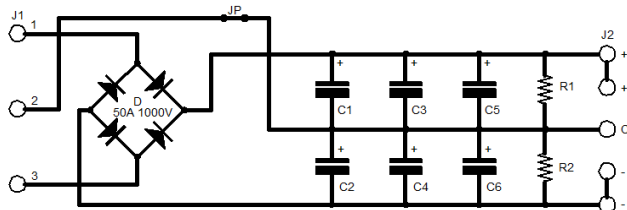
- Dimension:** 3" x 5.9" x 3.1-3.5" h
- Weight:** 2 Pound
- Mt Holes Space:** 2.7" x 3.2", 3.95" & 4.25"
- Mt Screws:** 6-32 tap holes x4

Standard Connection



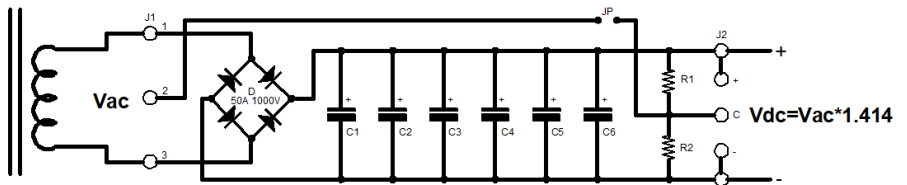
Model	Max V	Max I	Component Detail	H
DC-50H	50Vdc	50A	R1 & R2 = 2.0K 2W, C1 - C6 = 20000uF 50V	2.9"
DC-63H	63Vdc	50A	R1 & R2 = 3.3K 2W, C1 - C6 = 15000uF 63V	3.1"
DC-80H	80Vdc	50A	R1 & R2 = 3.3K 2W, C1 - C6 = 10000uF 80V	3.1"
DC-100H	100Vdc	35A	R1 & R2 = 4.7K 2W, C1 - C6 = 6800uF 100V	3.4"
DC-160H	160Vdc	30A	R1 & R2 = 7.5K 2W, C1 - C6 = 4700uF 160V	3.1"
DC-200H	200Vdc	20A	R1 & R2 = 10K 2W, C1 - C6 = 3300uF 200V	3.6"

Bipolar Connection

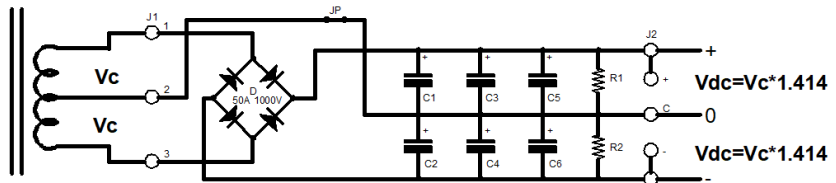


Model	Max V	Max I	Component Detail	H
DC-50HD	+/-50Vdc	50A	R1 & R2 = 4.7K 2W, C1 - C6 = 20000uF 50V	2.9"
DC-63HD	+/-63Vdc	40A	R1 & R2 = 6.8K 2W, C1 - C6 = 15000uF 63V	3.1"
DC-80HD	+/-80Vdc	30A	R1 & R2 = 6.8K 2W, C1 - C6 = 10000uF 80V	3.1"
DC-100HD	+/-100Vdc	20A	R1 & R2 = 9.1K 2W, C1 - C6 = 6800uF 100V	3.4"
DC-160HD	+/-160Vdc	15A	R1 & R2 = 15K 2W, C1 - C6 = 4700uF 160V	3.1"
DC-200HD	+/-200Vdc	10A	R1 & R2 = 20K 2W, C1 - C6 = 3300uF 200V	3.6"

Standard Connection: This is the most common rectification circuit. It uses in single voltage application. Its ripple is 120 cycles.



Bipolar Connection: It uses in bipolar voltage application. Its ripple is 120 cycles.



Doubler Connection: It uses in single voltage or bipolar voltage application. Its ripple is 60 cycles.

