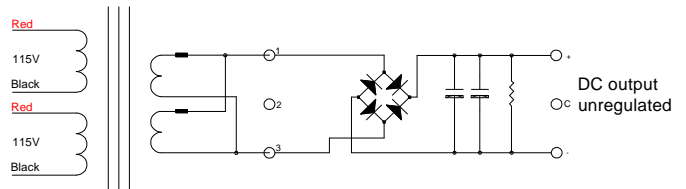
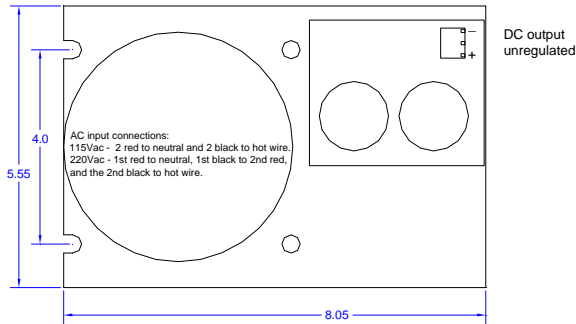


Picture includes fuse module

These power supplies are designed for used in the servo motor and stepper motor drive and high over loaded applications. They will work on both standard 115V and 230V at 50Hz or 60Hz. This toroidal transformer has heavier gauge wires than the normal requirement to avoid the copper lost during the full load output and over load output.

The power supply has a flexible add on option that allows more outputs as needed. The main output has 2 large capacitors to guaranty the output ripple to minimum.

The chassis is made of 3/32" thick aluminum for strength and heat dissipation from rectifier. It will work continuous without any over heat problem.



**AC power connections:**

115Vac – 2 red wires to neutral & 2 black wires to hot.  
220Vac – 1<sup>st</sup> red wire to neutral, 1<sup>st</sup> black wire to 2<sup>nd</sup> red wire, and the 2<sup>nd</sup> black wire to hot.

Part No.	Output	Capacitor		Note:
PS-3N30	30Vdc 10A	10000uF x 2	-	Output voltage can be wired for x2. Please specify when place order. Please order the fuse module separately.
PS-3N35	35Vdc 8A	10000uF x2	-	
PS-3N44	44Vdc 6A	10000uF x2	-	
PS-3N50	50Vdc 6A	10000uF x2	-	
PS-3N56	56Vdc 5A	10000uF x2	-	
PS-3N63	63Vdc 5A	10000uF x2	-	
PS-3N70	70Vdc 4A	10000uF x2	-	
PS-3N88	88Vdc 3A	5600uF x2	-	