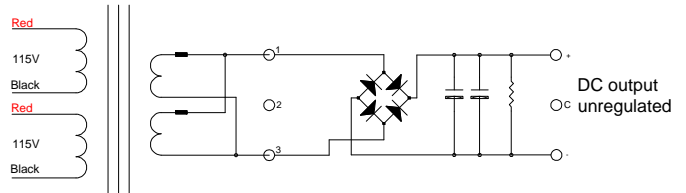
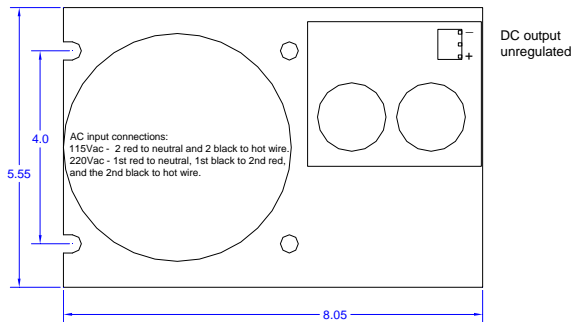


Optional fuse module included

These power supplies are designed for used in the servo motor and stepper motor drive and high over loaded applications. They will work on both standard 115V and 230V at 50Hz or 60Hz. This toroidal transformer has heavier gauge wires than the normal requirement to avoid the copper lost during the full load output and over load output. The power supply has a flexible add on option that allows more outputs as needed in the future. The main output has 2 large capacitors to guaranty the output ripple to minimum. The chassis is made of 3/32" thick aluminum for strength and heat dissipation from rectifier. It will work continuously without any over heat problem.



AC power connections:

115Vac – 2 red wires to neutral & 2 black wires to hot.
220Vac – 1st red wire to neutral, 1st black wire to 2nd red wire, and the 2nd black wire to hot.

Part No.	Output 1	Capacitor		Note:
PS-4N28	28Vdc 14A	22000uF x2	-	Output voltage can be wired x2. Please specify when place the order. Please order the fuse module separately.
PS-4N30	30Vdc 13A	10000uF x2	-	
PS-4N35	35Vdc 11A	10000uF x2	-	
PS-4N38	38Vdc 10A	10000uF x2	-	
PS-4N44	44Vdc 9A	10000uF x2	-	
PS-4N50	50Vdc 8A	10000uF x2	-	
PS-4N60	60Vdc 6A	10000uF x2	-	
PS-4N98	98Vdc 4A	3900uF x2	-	