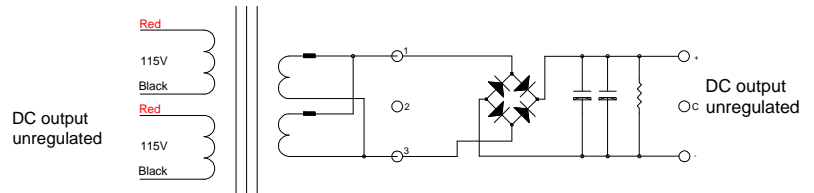
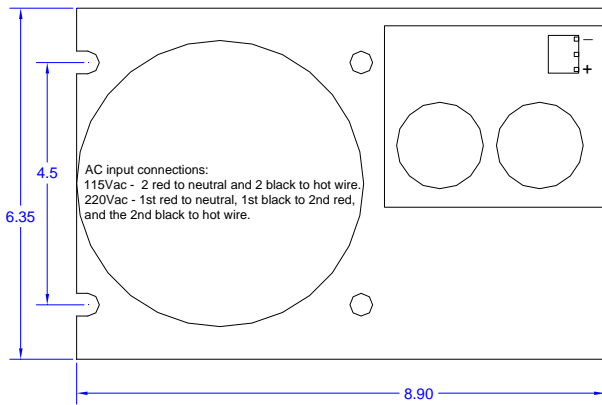


Optional fuse module is included

These power supplies are designed for used in the servo motor and stepper motor drive and high over loaded applications. They will work on both standard 115V and 230V at 50Hz or 60Hz. This toroidal transformer has heavier gauge wires than the normal requirement to avoid the copper lost during the full load output and over load output. The power supply has a flexible add on option that allows more outputs as needed in the future. The main output has 2 large capacitors to guaranty the output ripple to minimum. The chassis is made of 3/32" thick aluminum for strength and heat dissipation from rectifier. It will work continuously without any over heat problem.



AC power connections:

115Vac – 2 red wires to neutral & 2 black wires to hot.
220Vac – 1st red wire to neutral, 1st black wire to 2nd red wire, and the 2nd black wire to hot.

Part No.	Output	Capacitor	-	Note:
PS-5N28	28Vdc 17A	22000uF x2	-	Optional fuse module is available.
PS-5N30	30Vdc 16A	22000uF x2	-	
PS-5N35	35Vdc 14A	10000uF x2	-	
PS-5N38	38Vdc 13A	10000uF x2	-	
PS-5N44	44Vdc 12A	10000uF x2	-	
PS-5N60	60Vdc 8A	10000uF x2	-	
PS-5N90	90Vdc 6A	5600uF x2	-	
PS-5N98	98Vdc 5A	3900uF x2	-	